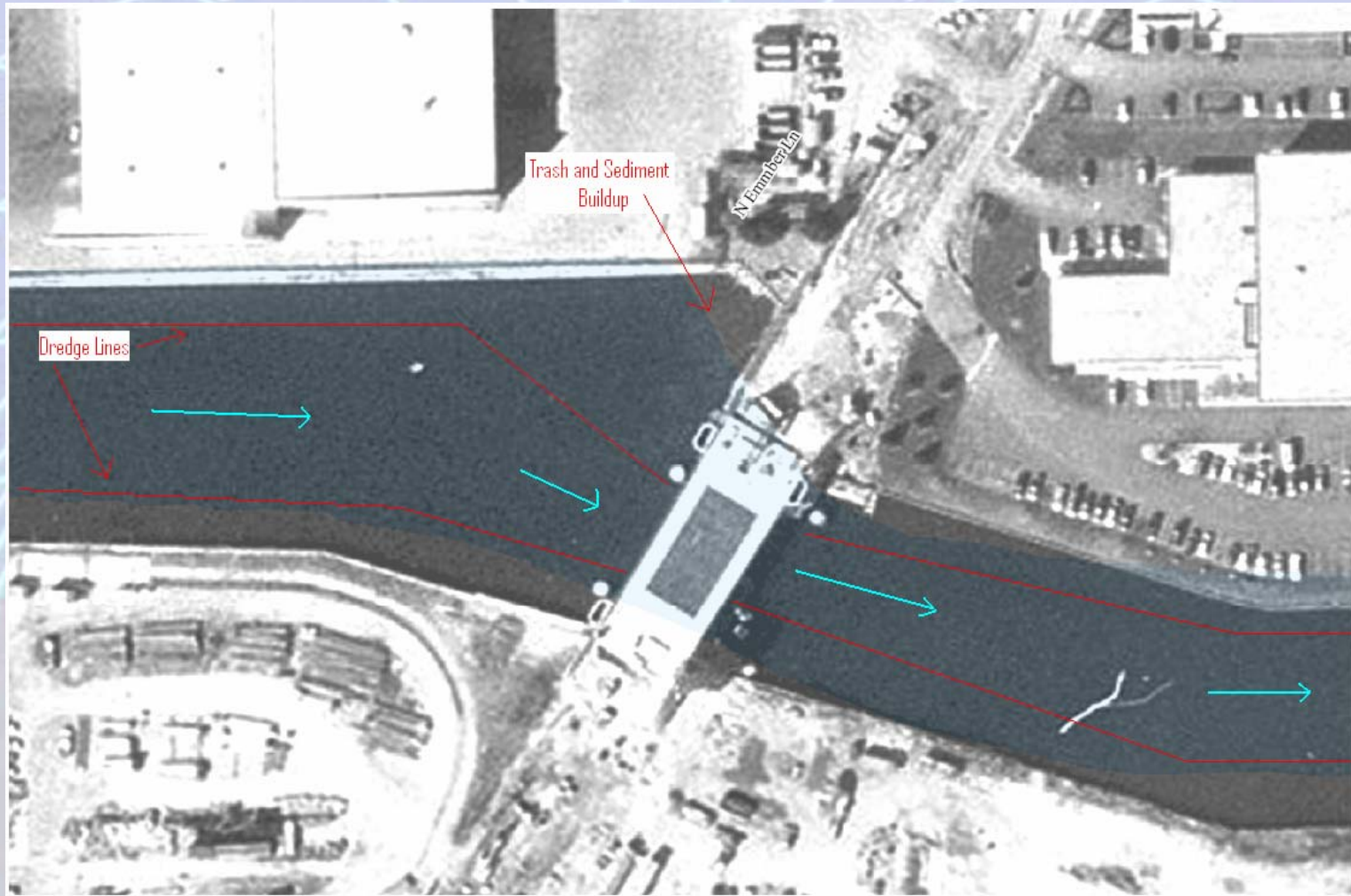


Site Layout



The corner was originally built to accommodate barges and tugboats.
There is no need for this now or in the future.

Overview

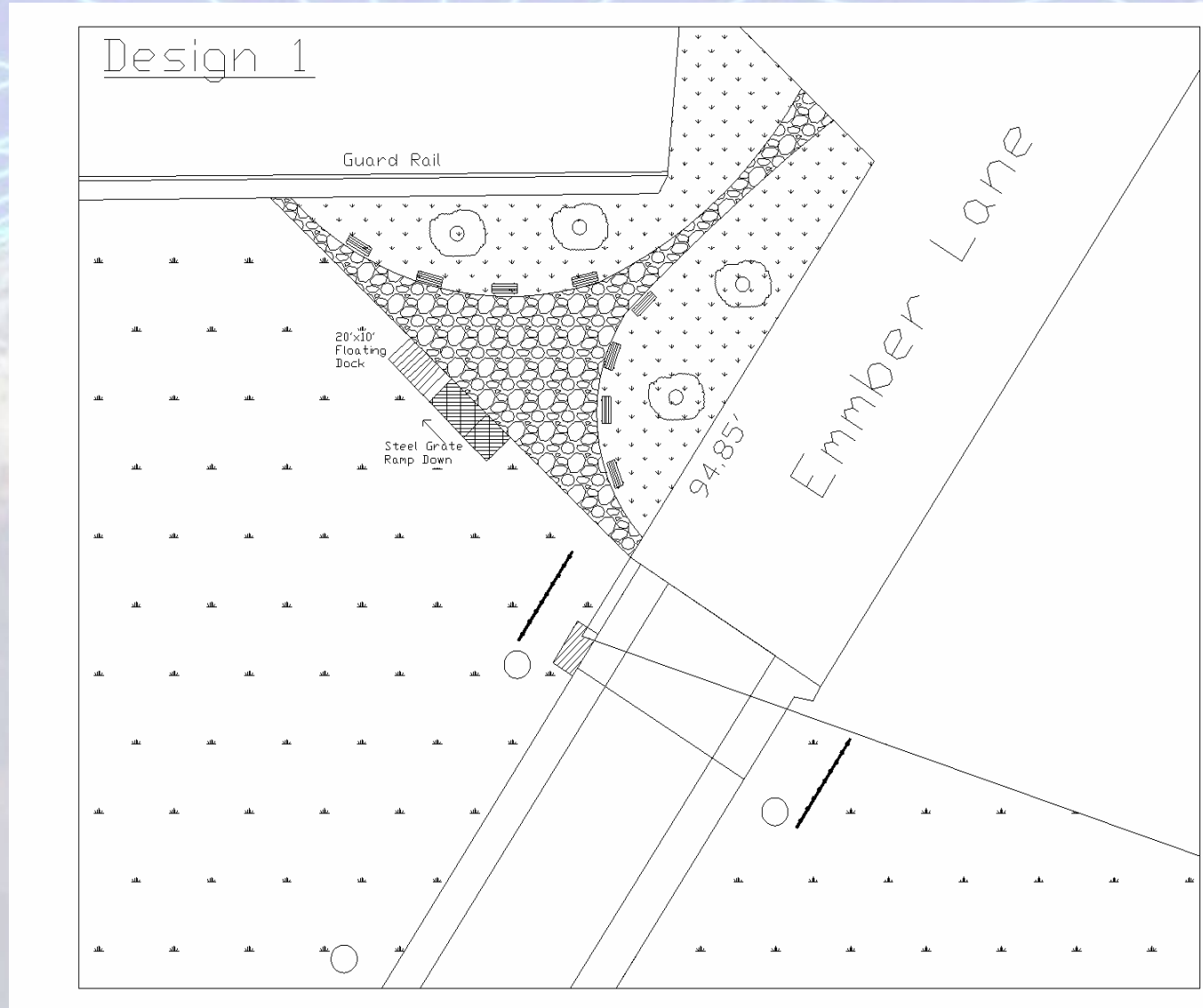
- **Due to the river hydraulics, there is a large trash and sediment buildup at the northwest corner of the bridge.**
- **The corner has been cleaned before but accumulates trash and sediment buildup within a months period of time.**



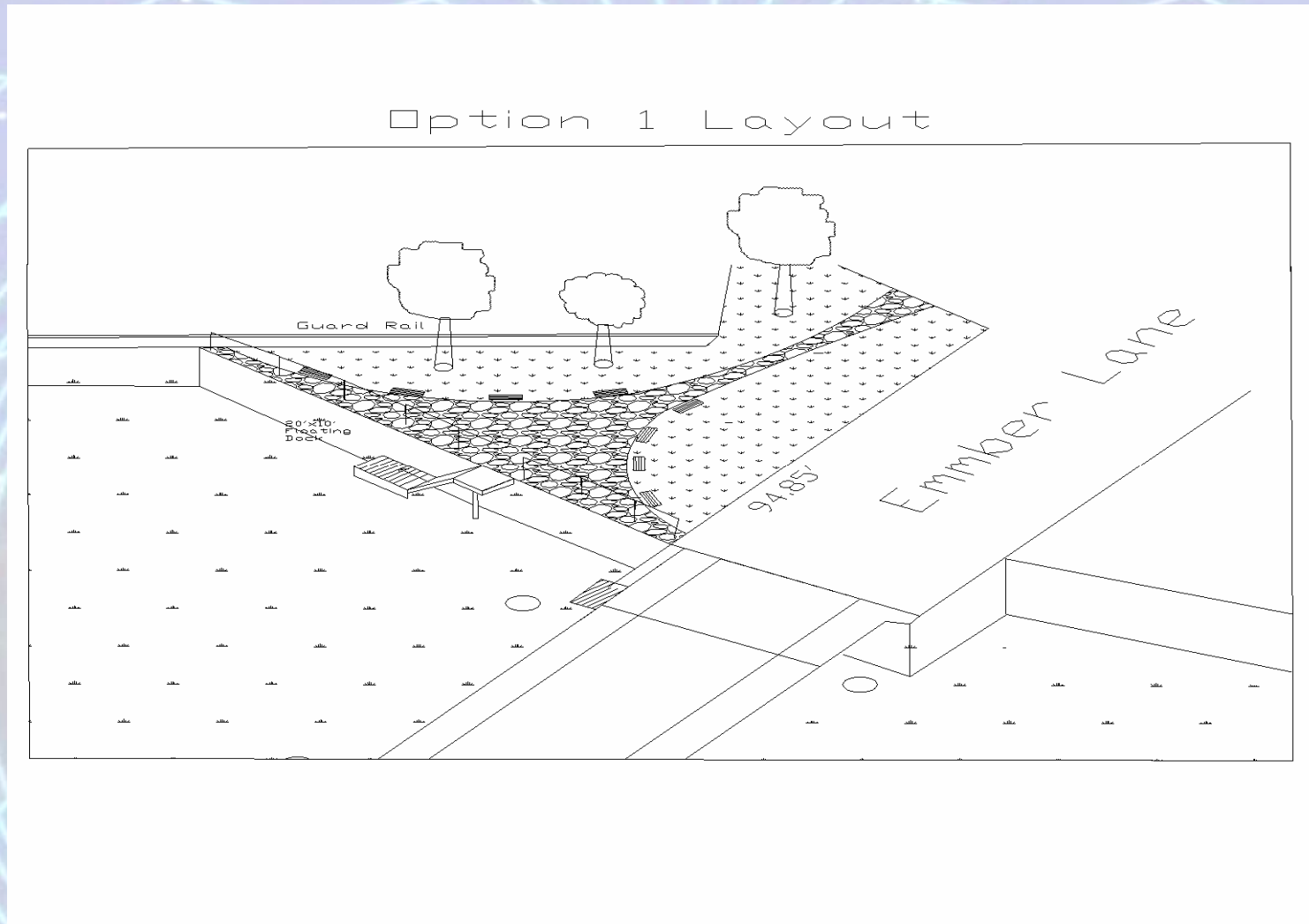
Design Option #1

Features

- Large Floating Launching Dock with Hinged access ramp (needed for changing water levels)
- Large area of Green Space and Park Area Added to Site



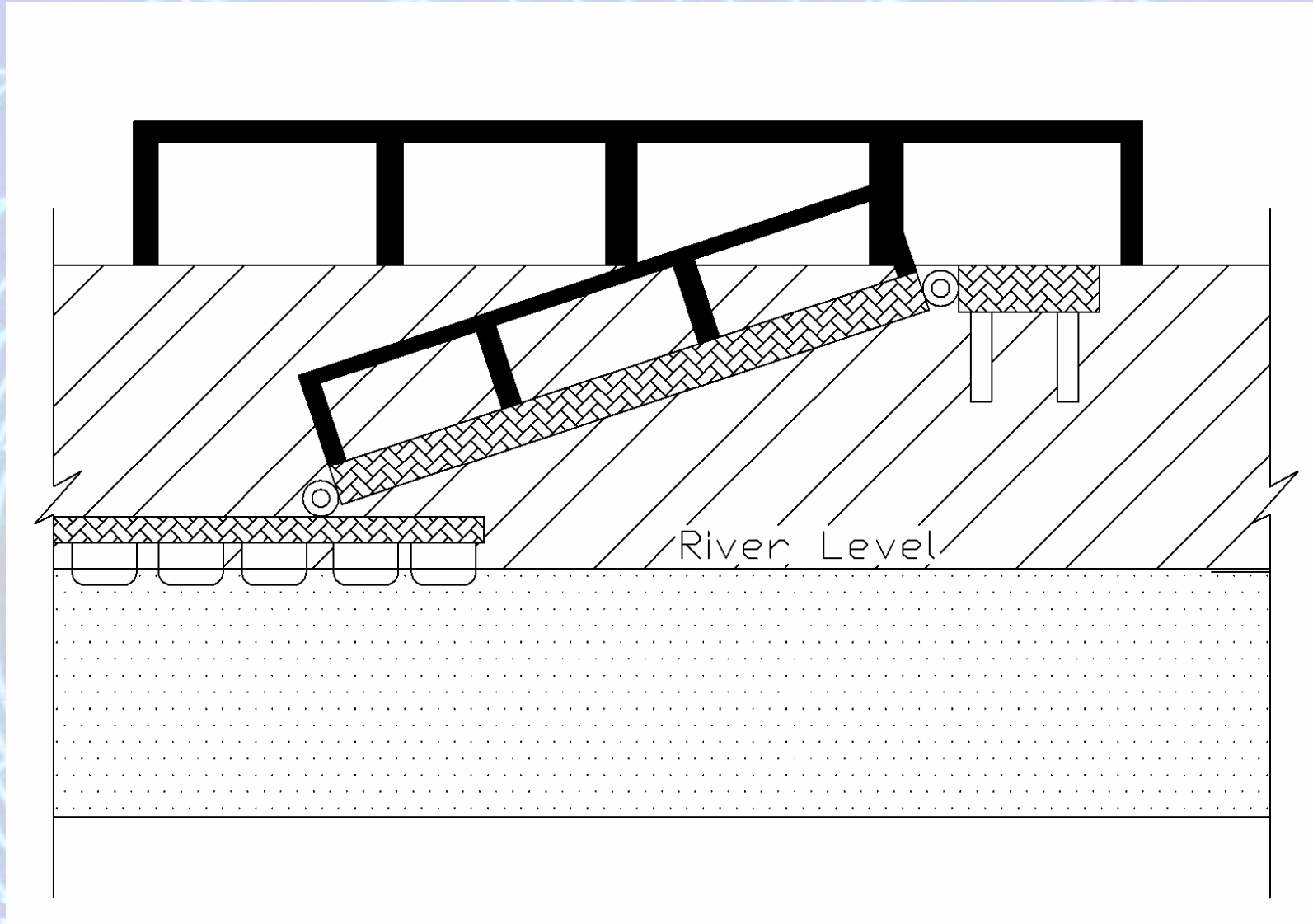
3D Layout for Design Option #1



Design Option #1



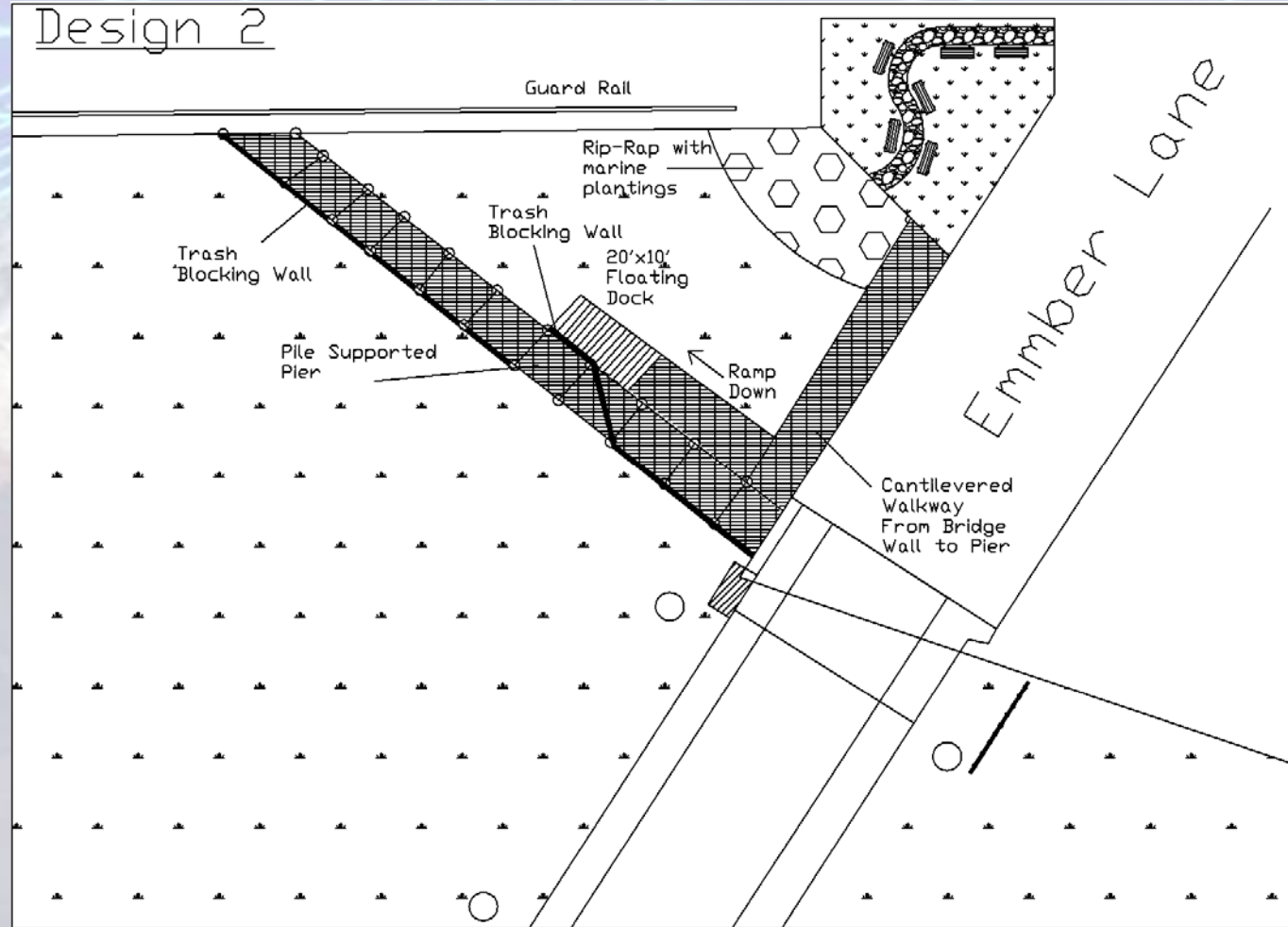
Ramp to Floating Dock Transition



Design Option #2

Features

- Trash Wall
- Pile Supported Viewing Walkway
- Rip-rap with Aquatic vegetation
- Cantilevered Access Walkway
- Large Floating Protected Launching Dock with Hinged access ramp (needed for changing water levels)



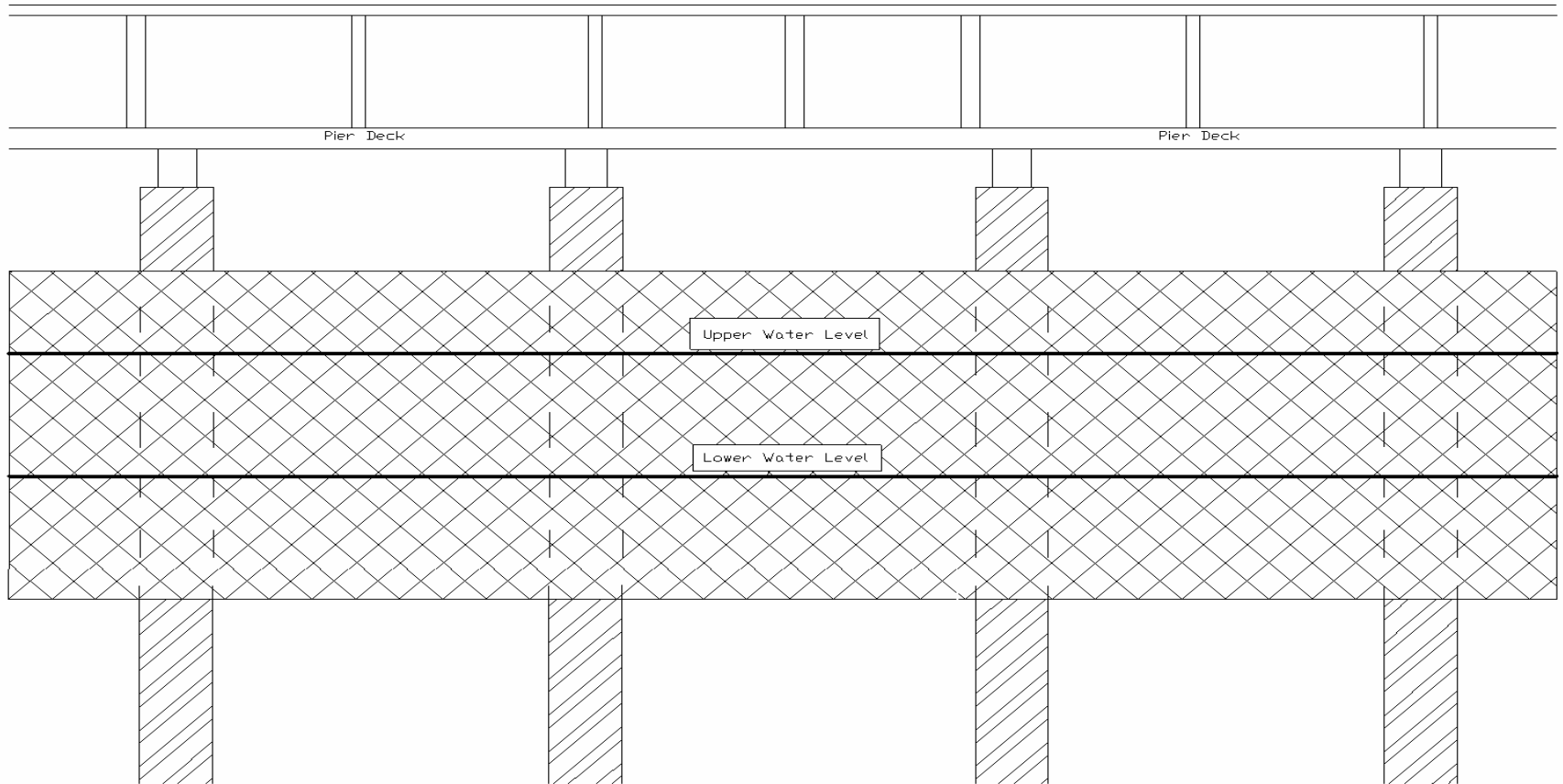
Design Option #2



Elevation for the Trash Screen

-The trash screen must be able to accommodate for both the lower and upper levels of the river throughout the year. Therefore it will run above the high level mark about 2.5 feet and beneath the water under the low level of the river of 3 feet.

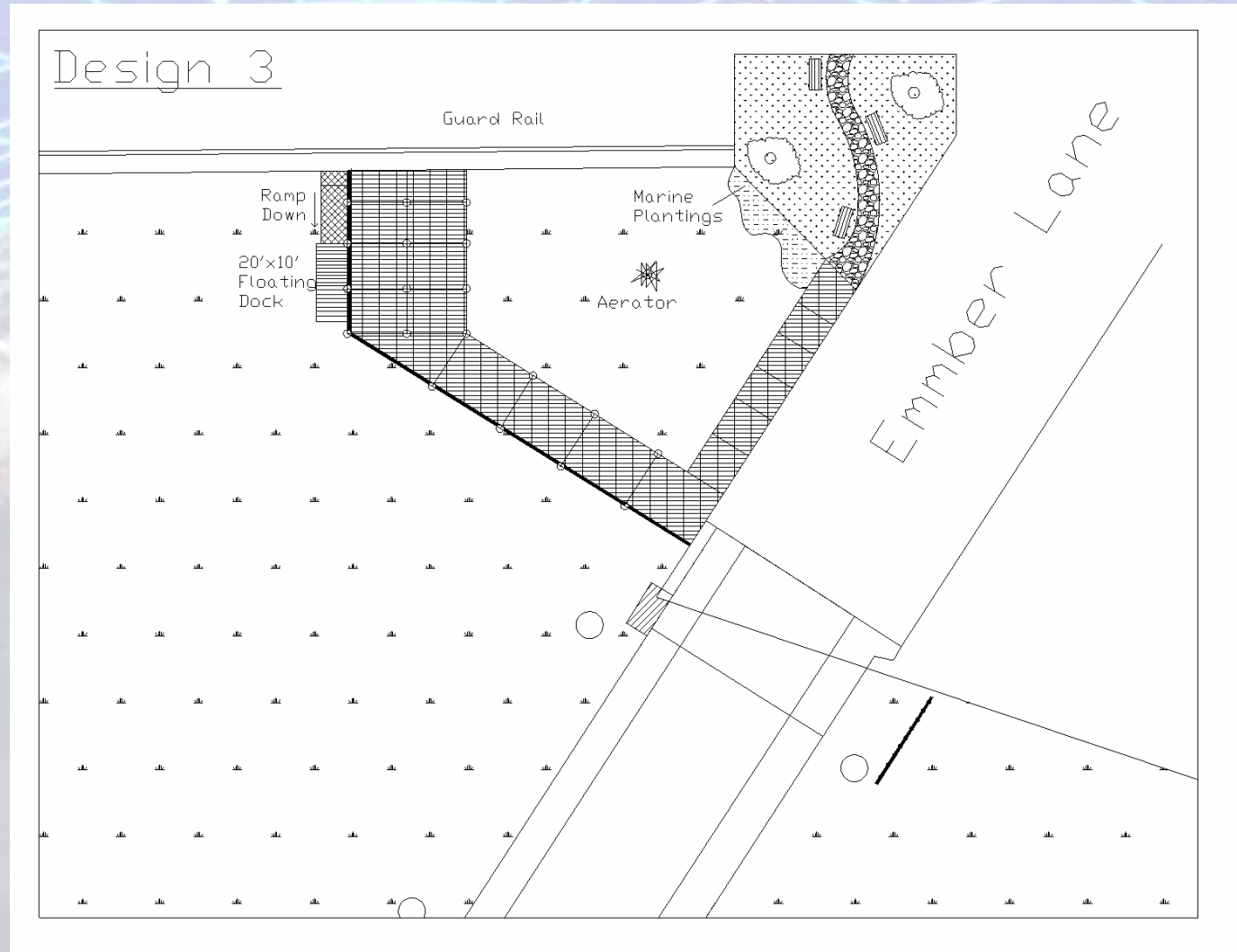
-Again, this is not meant to stop sediment but rather the trash and branches that accumulate in this corner. Material for this addition will be decided at a later time.



Design Option #3

Features

- Trash Wall
- Pile Supported Viewing Deck/Walkway
- Cantilevered Access to Walkway
- Large Floating Launching Dock with Hinged access ramp.
- Aerator
- Floating Islands



Design Option #3



Aeration

Benefits of aeration:

- Increased dissolved oxygen.
- Stops oxygen related fish kills



- Improves fisheries production by expanding oxygenated habitat.
- Reduces mosquito insect hatches (west Nile virus)
- Eliminates foul odors from undesirable dissolved gases



Floating Islands (optional)



Beautify and add interest to the waterscape

Natural improvement of water quality.



Provide wildlife habitat

Enhance fish habitat



Encourages fish propagation



The AquaCrib™ is the most functional, convenient and cost-effective means to date for encouraging sport fish propagation. Functions especially well in deep lakes, which often are lacking in protective vegetation. A durable shelter for fish through all life cycles, the AquaCrib™ encourages propagation of most inland-water species of fish.